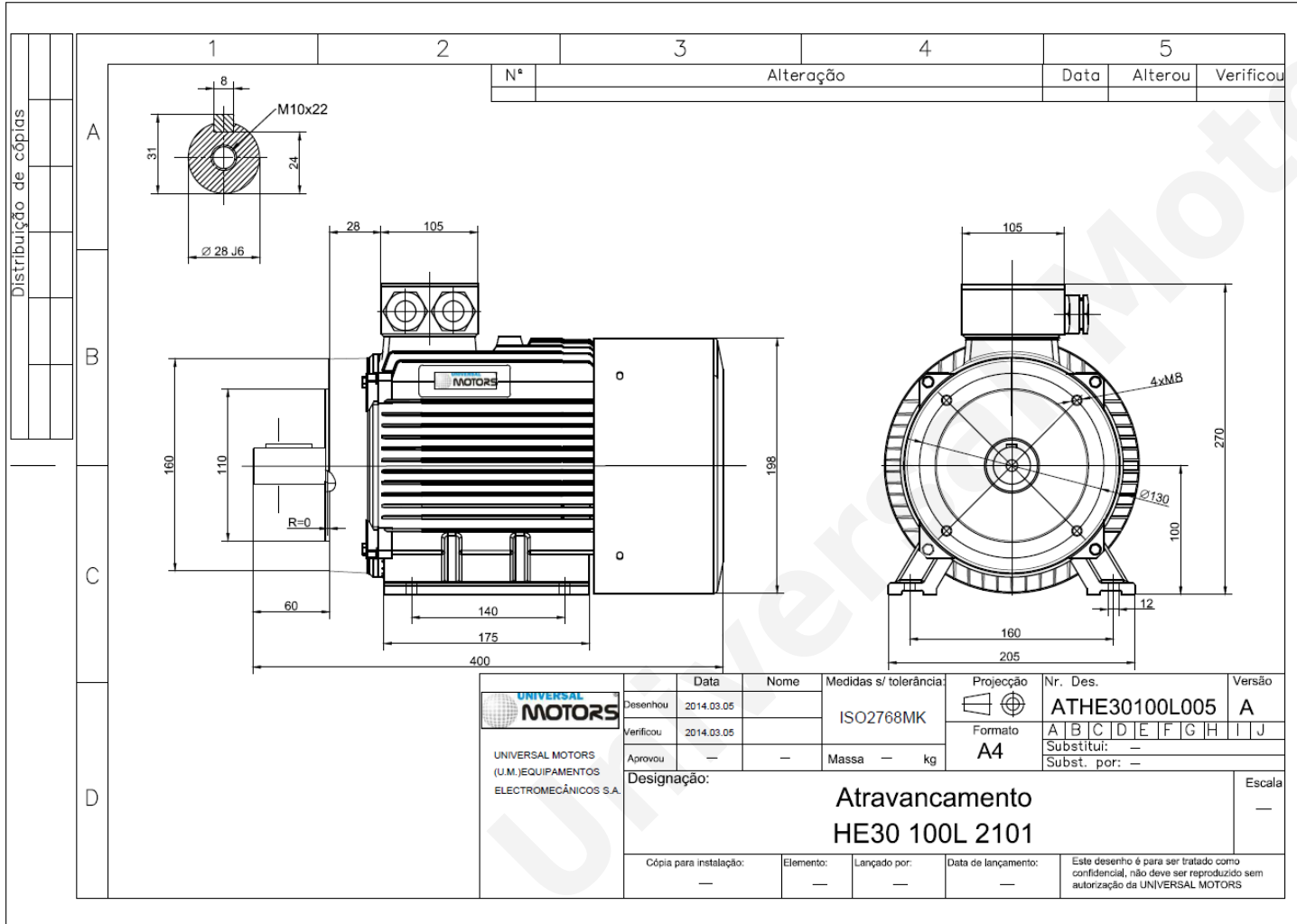


TECHNICAL DATA

Three Phase Electric Motors - Cast Iron Frame
 HE30 100 L1 2 IE2
 3 kW / 4 Cv
 2880 RPM



Motor type: **HE30 100 L1 2 IE2**
 Output: **3 kW / 4 Cv**
 Speed (min⁻¹): **2880 RPM**
 Frequency: **50 Hz**
 Voltage: **400 V**
 Current: **5.9 A**
 Power factor (Cos Ø): **0.87**
 Poles: **2**
 Insulation class: **F**
 Temperature rise Class: **B**
 Efficiency 50%: **84.1 %**
 Efficiency 75%: **85.8 %**
 Efficiency 100%: **84.6 %**
 Torque: **9.9 N.m**
 Tstarting/Tnominal: **2.3**
 Istarting/Inominal: **8.1**
 Tmaximum/Tnominal: **2.3**
 Noise: **65 Db(A)**
 Weight: **38 Kg**
 Bearing DE: **6206 2Z C3**
 Bearing NDE: **6206 2Z C3**

Regime - S1

Altitude - 1000m

Environment Temperature - 40°C

CONTACTS:

UNIVERSAL MOTORS Tel: +351 252 299 080
 Rua de São Brás,745 Fax: +351 252 299 089
 4480-782 VILA DO CONDE Mail: geral@universalmotors.pt

* References applied only in the UK